

INDESTRUCTIBLE AND ECONOMIC. THE SWAP STEEL BOXES.



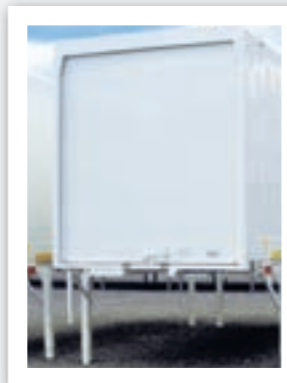
STEELY WHERE ECONOMIC TRANSPORTS ARE CONCERNED. KRONE STEEL BOXES SAVE YOUR LIFE CYCLE COSTS. IF STURDINESS AND ECONOMY ARE CONCERNED, KRONE ONCE MORE IS THE PRECURSOR. FOR YEARS, WE HAVE BEEN BUILDING SWAP BRIDGES AND STEEL COFFERS WITH EXEMPLARY QUALITY REGARDING CORROSION PROTECTION AND COATING, WHICH PROVIDE FIRST-CLASS VALUE PRESERVATION.

In addition, the box equipment pays for road transports with high average speeds. The smooth side walls reduce fuel costs due to low air resistance, at the same time, they

can be easily marked and cleaned. Of course there are a lot of practical detail solutions that you can count on.



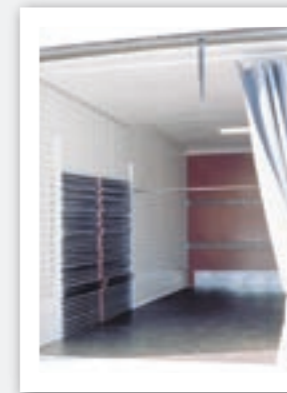
Trapezoid side walls.
The hard-wearing steel box with trapezoid side walls is particularly suited for a high railway transport portion, where lorries are only used for transports to and from the railway station.



Rolling door equipment.
For rapid loading cycles it is recommended to equip the box with rolling doors. The KRONE rolling doors are licensed by the German Railways.



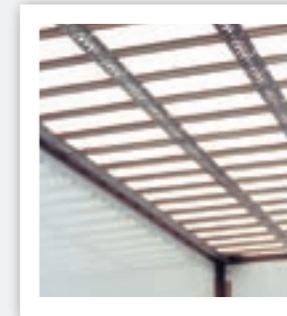
Variable interior equipment.
Optionally, several inner wall variations can be combined. Keyhole side walls with plywood inserts or plywood with strapping strips in the desired number and fitting height.



Equipment for transporting textiles.
For transporting textiles, the equipment with rolling door, keyhole side walls and empty rail support is recommendable. It also comprises a dust-protection curtain and a condensation water trough.



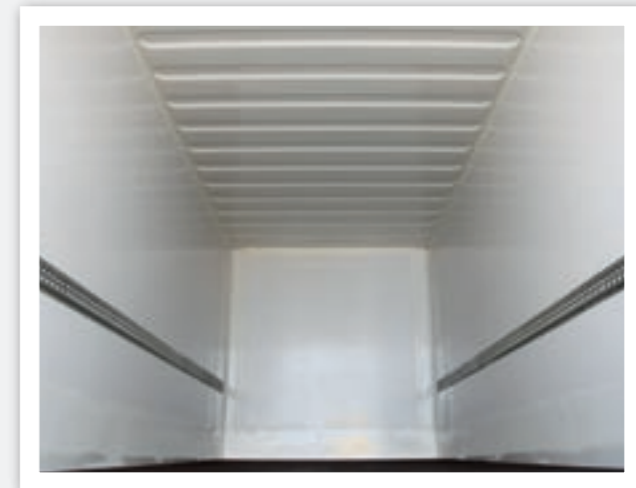
Versatile folding tables.
Practical solution for small package service: folding tables integrated in the side walls. In folded-in position, they provide keyhole plates for load securing; the full pallet width is retained.



Translucid plastic roof.
Better sight for loading and unloading work is offered by the translucid plastic roof. Optionally, only partial segments of this execution can be used.



Doubledeck equipment.
Doubledeck equipment is reasonable for utilising the container volume. In combination with the keyhole side walls, it offers optimum load securing.



Plywood equipment.
Plywood coffers are equipped with strapping rails for load securing which are attached on the inside.

150 mm lower floor group = 50 mm more inner height!



Functional corner protection.
Double corner protections are particularly suited if chassis for 7.15 m loading length are used.